



RECP #: 752857

RECORDED 5/8/2019 AT 1:21 PM BK# 2620 PG# 1899  
Debra K. Lee, CLERK OF LARAMIE COUNTY, WY PAGE 1 OF 1

# STATE OF WYOMING CORNER RECORD

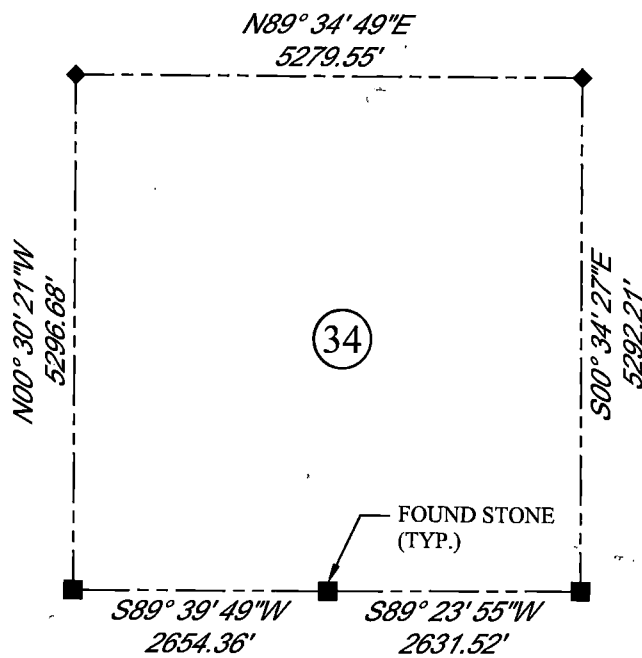
(In compliance with the CORNER PERPETUATION AND FILING ACT, Wyoming Statutes, 1997 Section 33-29-140, et. seq., and the Rules and Regulations of the Board of Registrations for Professional Engineers and Professional Land Surveyors)

## SOUTH QUARTER CORNER SECTION 34, T. 18 N., R. 63 W., 6TH P.M., LARAMIE COUNTY, WYOMING

**GLO:** SET A SANDSTONE 18X8X5, 12 IN. DEEP MARKED 1/4 ON THE NORTH EDGE FOR 1/4 SEC. CORNER.  
**FOUND:** BROKEN SANDSTONE ON SIDE NOT SET. NO MARKINGS FOUND.



SCALE: 1" = 2000'  
NORTH DETERMINED BY  
G.P.S OBSERVATIONS



### LEGEND:

- FOUND BLM CAP
- FOUND USFS CAP
- FOUND STONE
- FOUND PRIVATE MONUMENT
- ◆ CALCULATED POSITION
- ▲ SET MONUMENT (LS10245)
- SECTION LINE

DATE OF FIELD WORK: 08/22/2018 OFFICE REFERENCE: 746049

### CROSS INDEX DIAGRAM

	1	2	3	4	5	6	7	8	9	10	11	12	13	14	15	16	17	18	19	20	21	22	23	24	25
A																									
B																									
C		6																							
D			5																						
E				4																					
F					3																				
G		7																							
H			8																						
J				9																					
K					10																				
L		18																							
M			17																						
N				16																					
O					15																				
P		19																							
Q			20																						
R				21																					
S					22																				
T		30																							
U			29																						
V				28																					
W					27																				
X						26																			
Y							25																		
Z								34																	
	1	2	3	4	5	6	7	8	9	10	11	12	13	14	15	16	17	18	19	20	21	22	23	24	25

WOOD  
2615 AVIATION DRIVE  
SHERIDAN, WY 82801  
PH: 307-675-6400



THIS CORNER RECORD WAS  
PREPARED BY ME OR UNDER  
MY DIRECTION AND  
SUPERVISION,  
SEAL AND SIGNATURE

